

# ALLFETT®

CENTRAL LUBRICATION SYSTEMS & EQUIPMENT



**PROGRESSIVE SYSTEM  
DISTRIBUTORS**

## INTRODUCTION AND USER MANUAL

VERSION 2.00

## INTRODUCTION

All industrial machinery, equipments and vehicles are working under abrasive operating conditions. The wear between frictional parts become the most highest level at these conditions. Machinery expose bad weather, dust, dirt, rain, snow and heavy weight in most cases. Consequently unwanted breakdowns occur and by that way productivity loss is inevitable.

Using automatic lubrication system only increase your profitability. ALLFETT completely take over the work load spend on lubrication with a system which is bringing together a pump, control unit, distributors, tubes and couplings. Lubrication work is done by ALLFETT centralized lubrication systems in efficient time of machinery or vehicle which is while operating.

Lubrication is important for all frictional parts but using correct lubrication system and method only protect parts from wearing for a long time. Feeding lubrication points with correct dosage of lubricant at certain intervals while machinery is operating, provides lubricant film in place longer between parts. By ALLFETT lubrication systems life time of parts on your machinery and vehicles will be increased.

## ABOUT MANUFACTURER

With over 25 years experience of manufacturing Centralized Lubrication Systems ALLFETT is able to provide a wide professional approach to select the correct Centralized Lubrication System for industry and heavy machinery.

A highly accurate manufacturing process is involved in producing Centralized Lubrication Systems in order that systems meet the very tight quality procedures and state of the art processes are employed. ALLFETT is among the few companies whose products meet the exact technical and quality standards for a correct central lubrication. We present our high quality and advanced product design concept to our worldwide costumers through our strong brand.

ALLFETT creates new opportunities and innovative solutions. As a result of the satisfaction of our customers with our good quality lubrication systems we are continuing in growing in the local and international market and became one of the successful companies in the field.

## WARNINGS

Symbols and words shown below are meant to warn a particular risk to persons, material assets, or the environment. Please carefully read this manual before installing. Failure to follow the instructions and safety precautions in this manual could result in serious injury or property damage.

**Caution****Notice****Electricity****Prohibition**

## CONTENTS

INTRODUCTION _____	PAGE <b>1</b>
CONTENTS _____	PAGE <b>2</b>
PRODUCT DESCRIPTION _____	PAGE <b>3</b>
MODULAR COMPONENTS & PRODUCT DIMENSIONS _____	PAGE <b>4</b>
PRODUCT COMPONENTS _____	PAGE <b>5 - 6</b>
FUNCTIONAL DESCRIPTION _____	PAGE <b>7</b>
DOSAGE OPTIONS _____	PAGE <b>8 - 9 - 10</b>
OUTLET ALTERNATIVE SAMPLES _____	PAGE <b>11</b>
INSTALLATION INSTRUCTIONS _____	PAGE <b>12</b>
OPTIONAL INDICATOR INSTRUCTIONS _____	PAGE <b>13</b>
RULES TO COMPLY WHILE USING AND WARRANTY CONDITIONS _____	PAGE <b>14 - 15</b>
DISTRIBUTOR MAINTENANCE _____	PAGE <b>16 - 17 - 18</b>
ORDER INFORMATION _____	PAGE <b>19</b>
WARRANTY _____	PAGE <b>20</b>
WARRANTY CONDITIONS _____	PAGE <b>21</b>

## PRODUCT DESCRIPTION

Pilot controlled progressive distributors are designed to be used with ALLFETT central lubrication systems. The grease flow produced by the central lubrication pump will be delivered by these valves to the lubrication points in specific doses. Lubrication is done at any point in needed pressure (up to 400 bars).

Progressive distributor can be connected to directly pump element and also another progressive distributor outlet to meet exact dosage amount. Modular design of distributor block allows to feed all lubrication points in system with different specific dosages.

The control of lubrication system is operating can be done either by electronic sensor on distributor or visual indicator. If electronic system is used, the error is show by the control card included in the system.

Progressive distributor blocks divides the lubricat coming from pump in different or same amount of dosages. Necessary lubrication point numbers can be feeded with exact amount of grease dosage.

Distance between lubrication points and distributor can be 5 meters long. Steel, poliamid or high pressure tube types can be used with their recomendated couplings.

## GENERAL SPECIFICATIONS

<b>Max. working pressure</b>	: 400 bar.
<b>Min. pressure to operate</b>	: 7,5 bar.
<b>Grease types</b>	: NLGI - 00, 0, 1, 2, 3
<b>Outlet thread</b>	: M10x1
<b>Mounting screws</b>	: M6 allen screws
<b>Outlet variations</b>	: From 2 outlet to 18 outlet can be ctreated in single distributor block.
<b>Piston dosage volumes</b>	: Ø4mm piston - 0.050cc / stroke Ø5mm piston - 0.078cc / stroke Ø6mm piston - 0.113cc / stroke
<b>Operating temperatures</b>	: -25°C +80°C
<b>Modular elements</b>	: At least 3 middle element, at most 9 middle elements can be used single distributor block



**Distance between lubrication points and distributor can be 2 meters. Between 2 and 5 meters distances a check-valve should be used at outlet. Do not use longer than 5meters.**

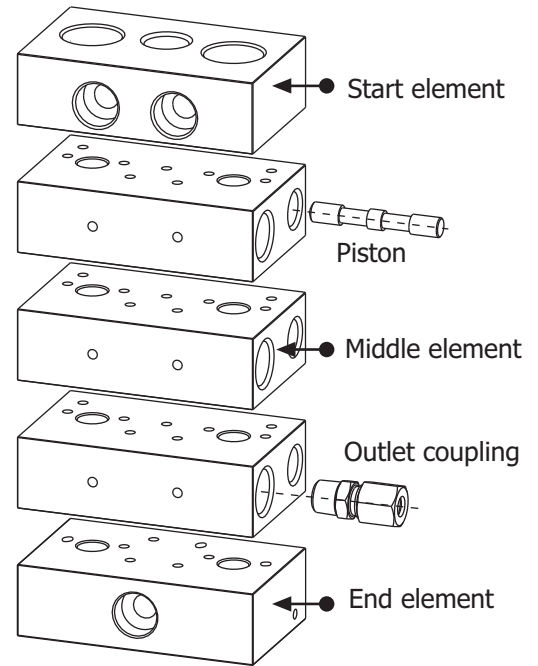
## MODULAR COMPONENTS

Progressive distributor block is created by combining 3 different elements. Block is named by middle element quantity its own. (for example 3/6 block means 3 middle element and 6 outlet ports)

**Start element** allows grease inlet to distributor block.

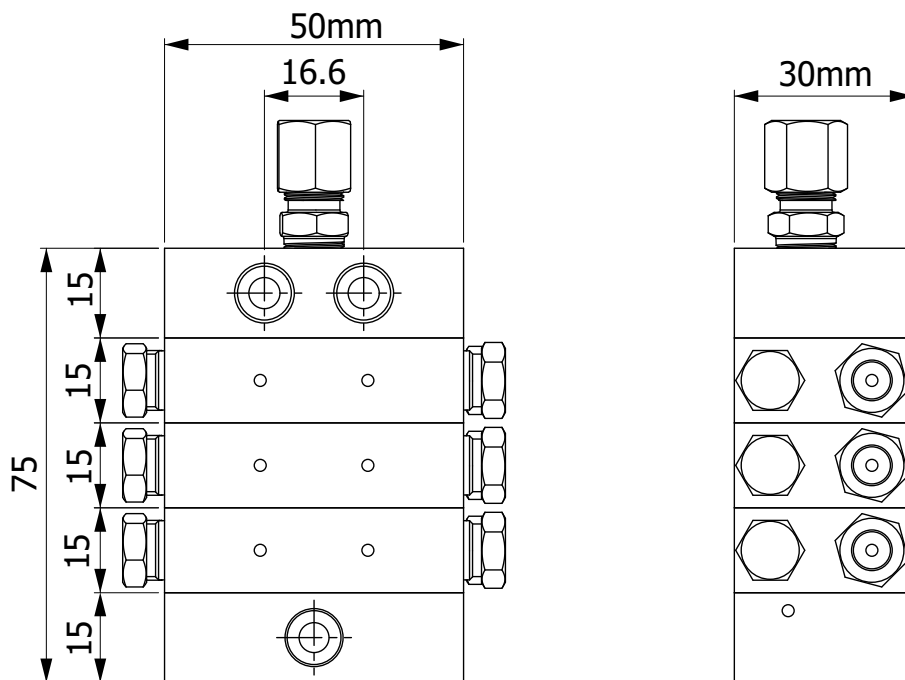
**Middle element** supply outlet ports and pilot controlling system.

**End element** allows the pilot system to be operated continuously.



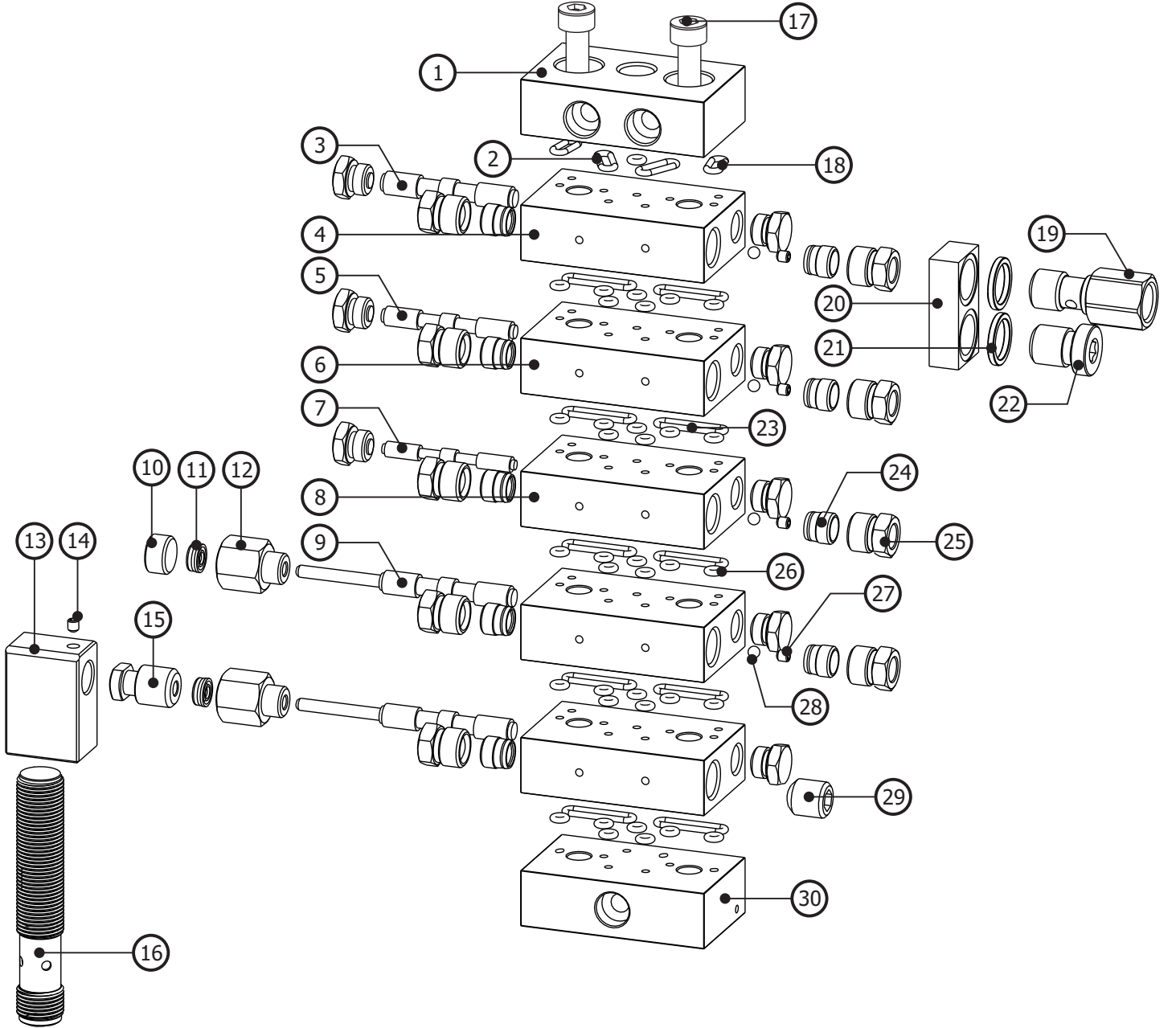
## GENERAL DIMENSIONS

Technical drawing below represents the distributor block that has 3 middle elements and 6 outlets. Each middle element increasing adds 15mm to total height dimension.



## PRODUCT COMPONENTS - (SCHEMA)

Technical drawing below represent distributor block components which is standard and optional. Each component showed by numbers and next page shows explanation of each number.



## TECHNICAL SERVICE

**ALLFETT MEKANİK VE ELEKTRONİK SİSTEMLER SAN. VE TİC. LTD. ŞTİ.**  
Yeni Eyüp Bulvarı, Topçular Caddesi, Set Üstü, No:1 Demirkapı-Ramı / İstanbul  
Telefon: 0 212 501 32 01 (PBX) [www.allfett.net](http://www.allfett.net)  
Fax : 0 212 501 33 37 [info@allfett.net](mailto:info@allfett.net)

## PRODUCT COMPONENTS - (DESCRIPTION)

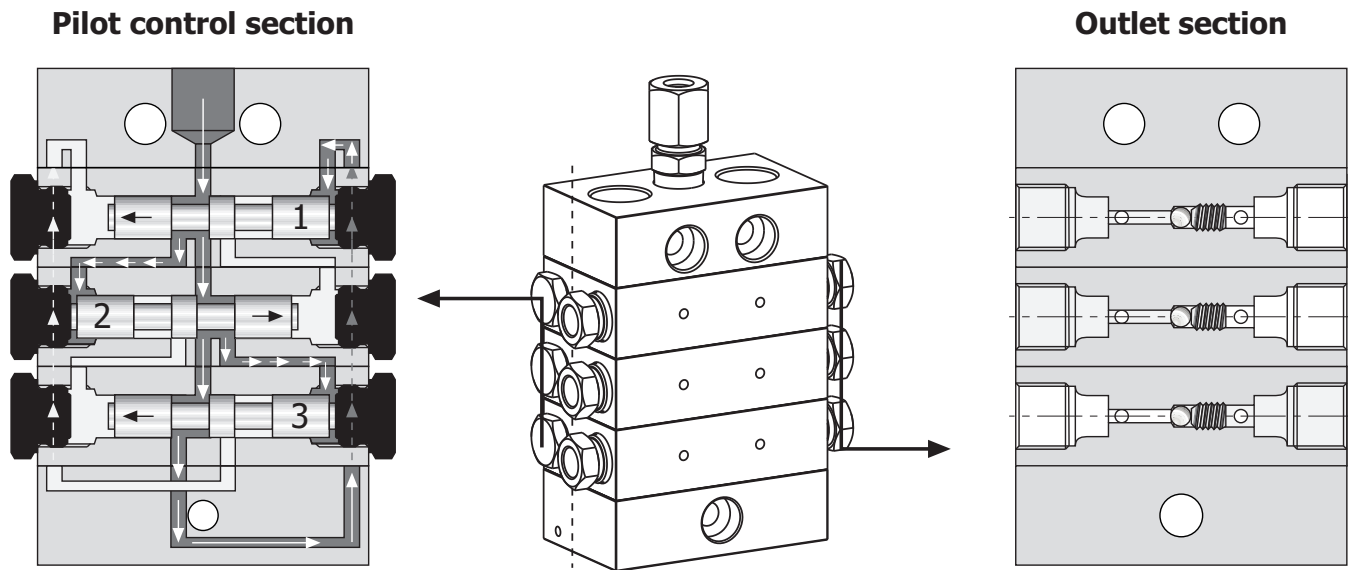
Product component descriptions are shown below. Each component showed by numbers in page 5. explained below.

<b>1.</b>	Start element	Standard component
<b>2.</b>	Ø7x1,5 O-Ring	Standard component
<b>3.</b>	Ø6mm piston	Standard component
<b>4.</b>	Middle element 0.113cc	Standard component
<b>5.</b>	Ø5mm piston	Optional component
<b>6.</b>	Middle element 0.078cc	Optional component
<b>7.</b>	Ø4mm piston	Optional component
<b>8.</b>	Middle element 0.050cc	Optional component
<b>9.</b>	Indicator piston	Optional component
<b>10.</b>	Mechanical indicator screw	Optional component
<b>11.</b>	Ø3xØ7x3 nutring	Optional component
<b>12.</b>	Mechanical indicator body	Optional component
<b>13.</b>	Sensor holder	Optional component
<b>14.</b>	M3 set screw	Optional component
<b>15.</b>	Digital sensor coupling	Optional component
<b>16.</b>	Digital sensor	Optional component
<b>17.</b>	Assembly screws	Standard component
<b>18.</b>	Ø6x1,5 O-Ring	Standard component
<b>19.</b>	Bridge coupling (outlet)	Optional component
<b>20.</b>	Bridge body	Optional component
<b>21.</b>	Washer	Optional component
<b>22.</b>	Bridge coupling (Blind)	Optional component
<b>23.</b>	Ø14x1,5 O-Ring	Standard component
<b>24.</b>	Cutting ring (steel)	Standard component
<b>25.</b>	Outlet coupling	Standard component
<b>26.</b>	Ø2x1,5 O-Ring	Standard component
<b>27.</b>	M4 set screw	Standard component
<b>28.</b>	Ø2,5 steel ball	Standard component
<b>29.</b>	Outlet blinding screw	Optional component
<b>30.</b>	End element	Standard component

## FUNCTIONAL DESCRIPTION

Along with grease pump in system starts to operate ;

Lubricant sended from pump gives movement to pistons in pilot control section of distirbutor block. Sequential movement of pistons is continue during pump operates. Pistons are moving in order while pressurized lubricant coming. When a piston moves to complately one side the dosage amount of piston feeds lubrication point. Each piston feeds connected lubrication points untill pump stops.



Progressive distributor is connected directly to pump outlet. When necessary, a progressive distributor can also be connected to other distributor outlet for dosing purposes. Modular design of distributor block allows to answer any specific dosage needs.

Pilot control of distributor stops to operate and not send any grease if any lubrication point is blocked. Optional indicator equipments can monitor this blockage. Digital or mechanical indicator options allows you to warn any blockage in lubrication system. Alarm signal can be created if digital indicator and electronic control system are used.

Lubrication point indicator option allows you to monitor which lubrication point is blocked. Alarm signal can be created for blockage with using pressure and electronic control systems. When lubrication point indicator is used, distributor block still operates if there is a blockage.



**Unauthorized modifications to the units and the use of unauthorzied spare parts and aids prohobited also disqualify the warranty.**

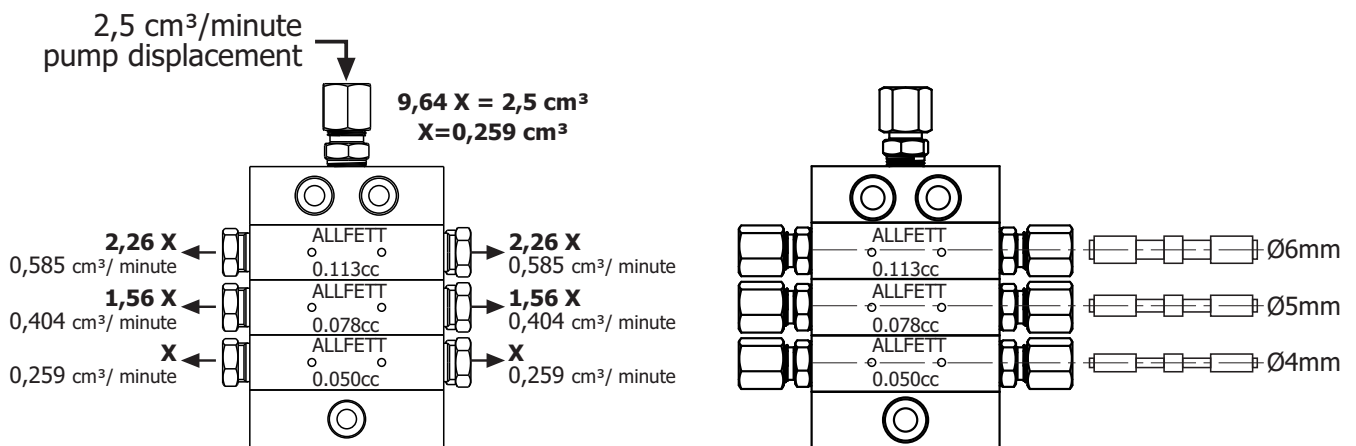


## DISTRIBUTOR BLOCK DOSAGE OPTIONS

Progressive distributor blocks divide the lubricant coming from pump in different or same amount of dosage. Necessary lubrication point numbers can be fed with exact amount of grease dosage. Description below explains different types of dosage adjustment methods.

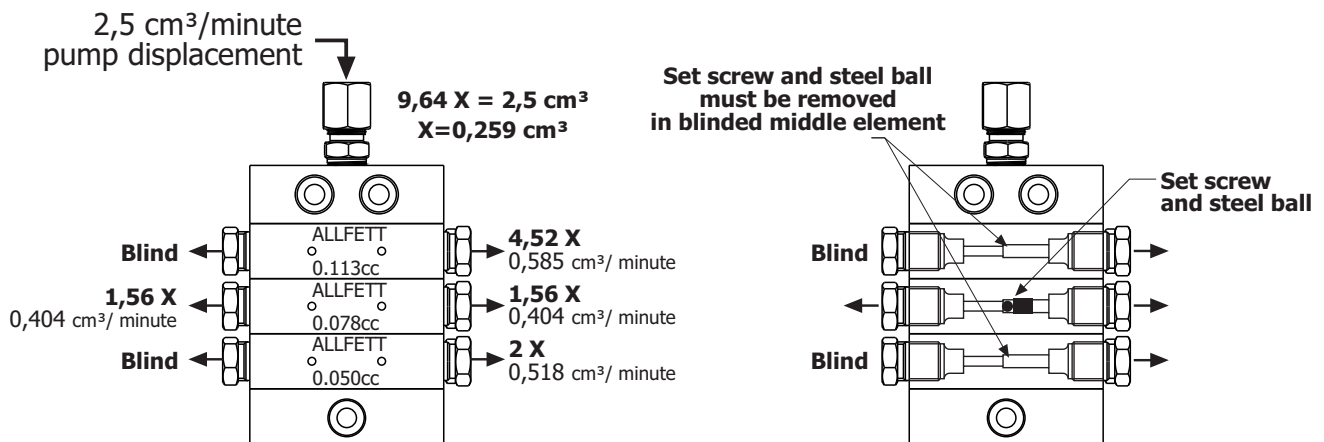
### 1. Dose adjustment with piston sizes.

Progressive distributors have 3 different sizes of pistons. These pistons are Ø4mm (0,050cc stroke), Ø5mm (0,078cc stroke) and Ø6mm (0,113cc stroke) diameter sizes. Dosages can be calculated by dividing stroke volumes with each other. For example, Ø6mm piston volume is equal to 2,26x of 5mm piston ( $0,113 / 0,050 = 2,26$ ). Each outlet volume of distributor depends on the pump displacement.



### 2. Dose adjustment with blinding an outlet.

Piston dosage volumes may not be enough for lubrication points. Single or multiple outlets can be blinded to increase outlet volume of a middle element for twice of its amount. Distributor block outlet quantity will be decreased equal to blinded outlets. As described on schema below, outlets of distributor block with 3 middle elements and 6 outlets is decreased to 4 outlets.

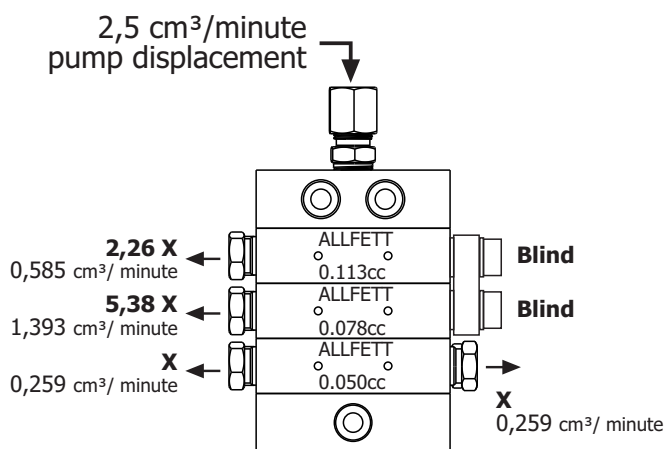


**Set screw and steel ball is placed into distributor block outlet section. Any blinding operation in a middle element, set screw and steel ball must be removed. If not, blinding cause blockage and distributor block not operates.**

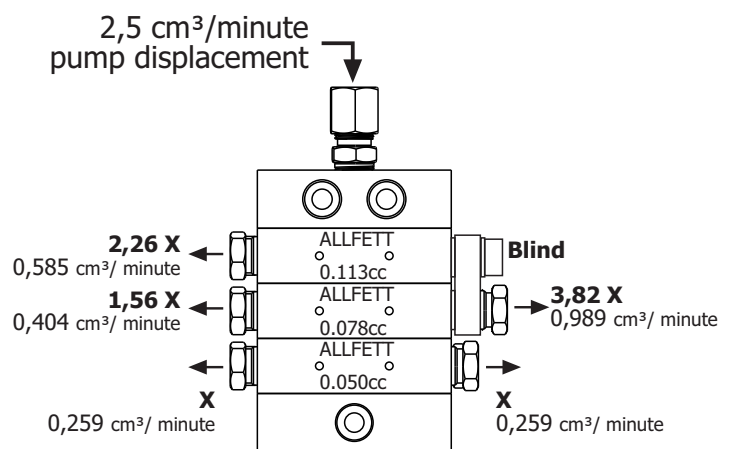
### 3. Dose adjustment with bridging two outlet.

Piston dosage volumes may not enough for lubrication points. Outlets of a neighbor middle elements can be bridged together to increase dose volume. Distributor block outlet quantity will be decreased by bridged outlet quantities. Two different type of bridge options allows alternating the outlet dosage amounts. As described on schema below, bridge with outlet and standard bridge components outlet volumes are different. Using different size pistons with bridge option crates different dosage variations.

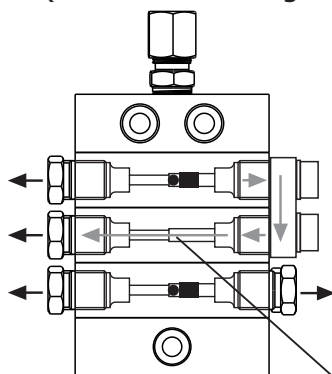
**Standard bridge example**



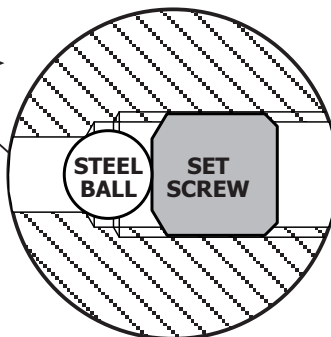
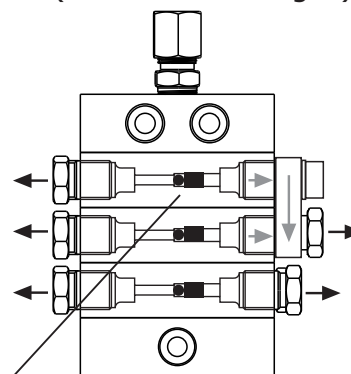
**Bridge with outlet example**



**Standard bridge flow diagram**  
(3 outlets are bridged)



**Bridge with outlet flow diagram**  
(2 outlets are bridged)



**Set screw and steel ball must be in its place if bridge with outlet option is used.**

**Set screw and steel ball must be removed if standard bridge option is used.**

## 4. Dose adjustment with pumps working period

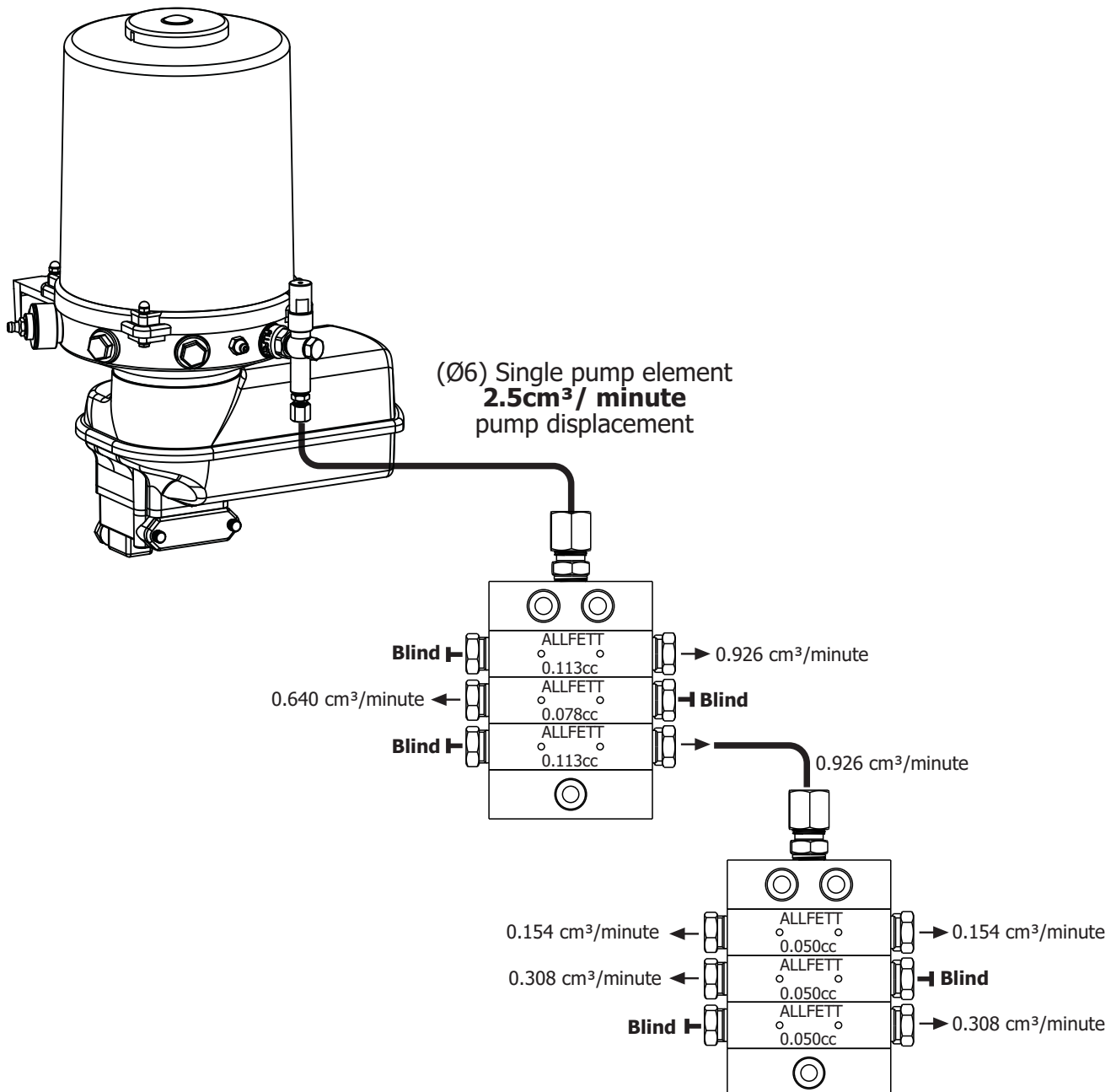
Total dosage amount of system is adjusted by pump element displacement. Different type of pump element pistons crate different displacement volumes. Also electrical motor types (AC and DC voltage) vary on displacemenet amount. When necessary, pump elements can be bridged to get more displacement with single outlet.

DC voltage ALL-1 pump displacements are :

Ø5, Ø6 and Ø7mm pistons of pump element supply 1.5cm<sup>3</sup>, 2.5cm<sup>3</sup> and 3.5cm<sup>3</sup> / minute displacement.

AC voltage ALL-10 pump displacements are :

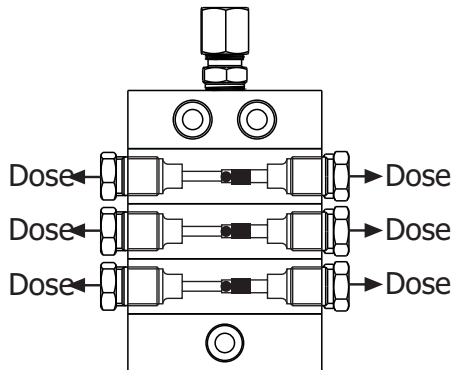
Ø5, Ø6 and Ø7mm pistons of pump element supply 5cm<sup>3</sup>, 7.5cm<sup>3</sup> and 9cm<sup>3</sup> / minute displacement.



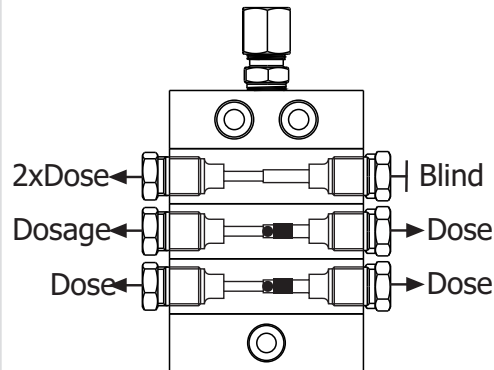
## DISTRIBUTOR BLOCK OUTLET ALTERNATIVE SAMPLES

Drawings below represent the alternative outlet variations of a distributor block. Dose volume rates and related outlet quantities of a single distributor block is explained with 3/6 distributor type example.

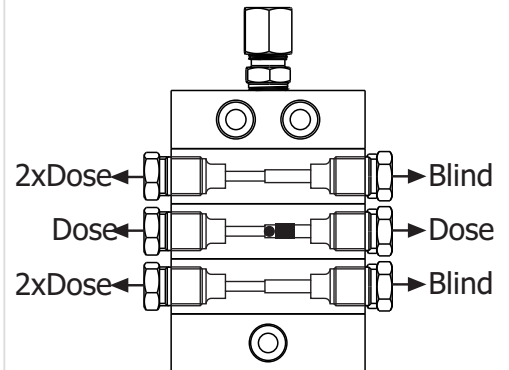
**3/6 Block  
(6 Outlets)**



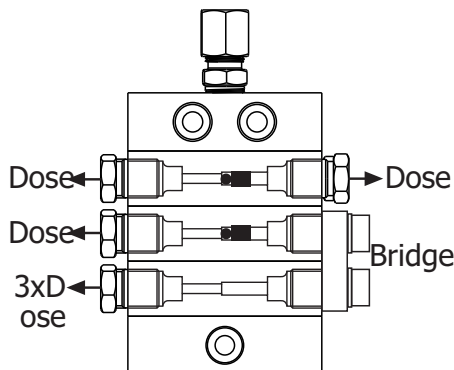
**3/6 Block  
(5 Outlets)**



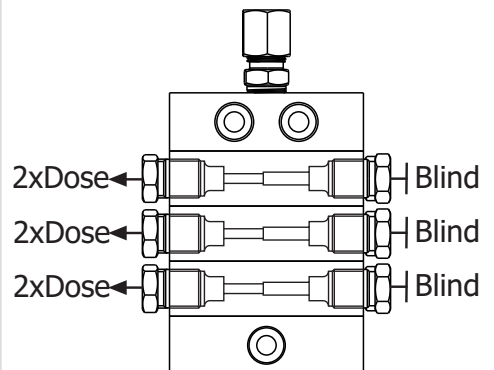
**3/6 Block  
(4 Outlets)**



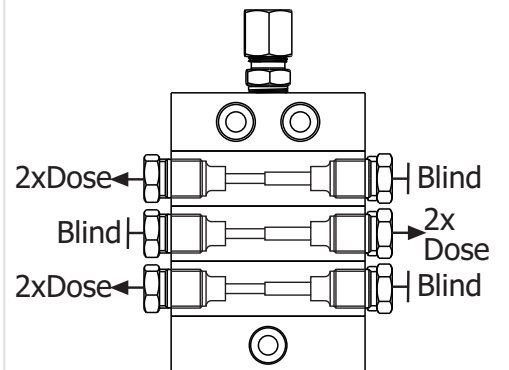
**3/6 Block  
(4 Outlets)**



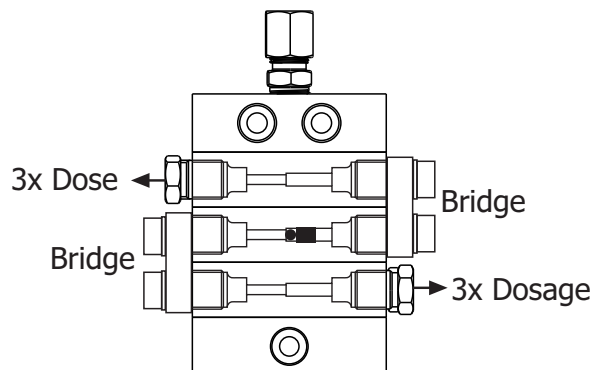
**3/6 Block  
(3 Outlets)**



**3/6 Block  
(3 Outlets)**



**3/6 Block  
(2 Outlets)**



## DISTRIBUTOR BLOCK INSTALLATION INSTRUCTIONS

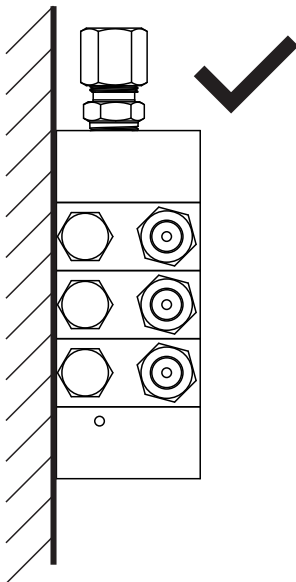
Before installing distributor block to any equipment there are important points for proper installation. This section explains the necessary information before installing a distributor block.



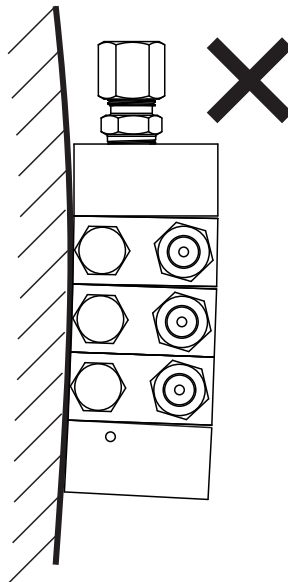
**Before installing a distributor block, the installation position must be considered by environmental factors.**

1. Connection thread of lubrication points must be determined before installing. The couplings that will be used on lubrication points also be determined before installing.
2. Distance between lubrication point and distributor block must be maximum 2 meters long. But if more distance needed, check-valve must be used on all distributor outlets up to 5 meters distance. Do not install distributor block longer than 5 meters distance.
3. Progressive distributors must be installed on flat surface. Installing a distributor block non-flat surface cause damage to the distributor block and leakage between modular elements. If surface of equipment is not flat, distributor mounting bracket must be used. The drawings below represents the correct and wrong installation examples.

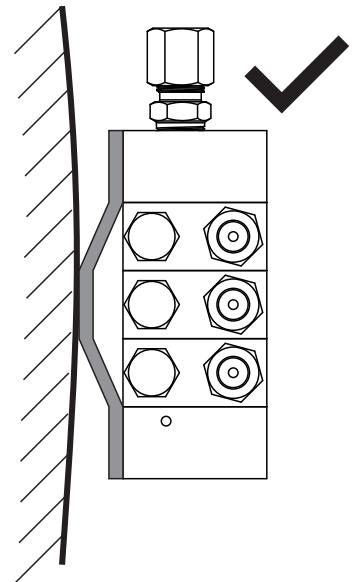
**CORRECT** Installation



**WRONG** Installation



**CORRECT** Installation



4. Moving sections of equipment must be considered before installation. Any moving parts must be feeded by flexible hose types and swivel couplings. Also tube length must be long enough to handle movement. Any stationary lubrication points can be feeded by steel tubes.



**After completing installation, the air inside the tubes must be out. All lubrication lines must be filled with grease.**

## OPTIONAL INDICATOR INSTRUCTIONS

The indicator equipments explained below are optional. Any Specific equipment can be used in centralized lubrication systems for more controlled operations. Each equipment detail is explained below.



### MECHANICAL CYCLE INDICATOR

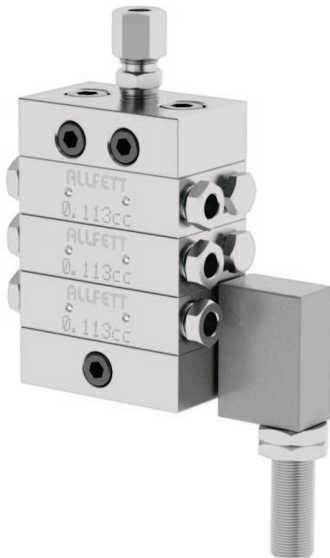
This equipment is designed to monitor that the progressive distributor is operating. User must be monitor this equipment by eye while system in working period.



Each distributor blocks connected to different pump outlet must be equipped with digital or mechanical cycle indicator to monitor all distributors in system.



Equipping main distributor connected to sub distributors with digital or mechanical cycle indicator is enough to monitoring all distributors in system.

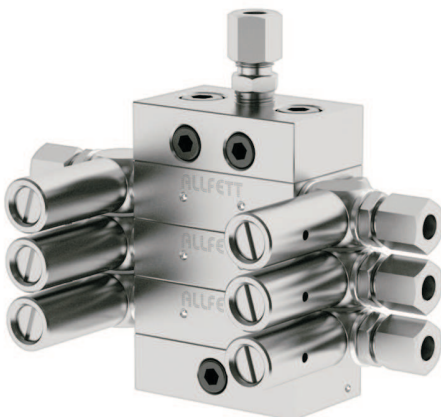


### DIGITAL CYCLE INDICATOR

This equipment is designed to monitor that the progressive distributor is operating. User can be monitor this equipment by electronic control system while system in working period. Digital sensor in this equipment can send signal to control system with 2 different type explained below.

**PnP Sensor** : Sense signal is (+) positive. Normally open type contact can be used.

**NpN Sensor** : Sense signal is (-) negative. Normally open type contact can be used.



### BLOCKED LUBRICATION POINT INDICATOR

Any lubrication point in system can be monitored for blockage. Each outlet equipped with blockage indicator allows user to determine which lubrication point is blocked easily. With this equipment, progressive distributor continue to operate if there is a blockage

Pressure switch can be used with blocked point indicator to monitor system with electronically.

## **RULES TO COMPLY WHILE USING AND WARRANTY CONDITIONS**

- 1.** Damages occur while additional transports after delivering the goods from ALLFETT to the customer **DISQUALIFIES THE WARRANTY.**
- 2.** Washing of the parts with pressured water causes damage. Any damage occur from this reason **DISQUALIFIES THE WARRANTY.**
- 3.** Only proper NLGI class lubricants must be used with in system. NLGI class must be changed according to weather conditions. Use NLGI 0 for cold weather, increase the NLGI class up to 3 towards hot weathers.
- 4.** Only LITHIUM based and EP additive lubricants must be used with in system.
- 5.** Rubber based lubricant types must not be used in the system. Damages or faults occur from this reason **DISQUALIFIES THE WARRANTY.**
- 6.** Sticky based lubricant types must not be used in the system. Damages or faults occur from this reason **DISQUALIFIES THE WARRANTY.**
- 7.** Lubricant will be used in the system must certainly be clean and any foreign materials must not enter while filling.
- 8.** Any foreign materials, dirt or small particules while filling lead to system units failing and possibly property damage to equipments. Damages or faults occur from this reason **DISQUALIFIES THE WARRANTY.**
- 9.** Pump must be filled from the grease nipple. If grease level is lower than the minimum level (as you can not see grease level) grease nipple must be used to prevent air entrance inside the pomp body. Lockable filling cover option can only be used after filling pump from grease nipple up to minimum level.
- 10.** If lockable filling cover will be used to fill pump, environment must be clean to avoid any foreign materials entering to reservoir. Any foreign materials, dirt or small particules while filling lead to system units failing and possibly property damage. Damages or faults occur from this reason **DISQUALIFIES THE WARRANTY.**
- 11.** Progressive distributors have pilot control. It is necessary to use ant least 3 middle element and at most 9 middle element in a single distributor block.
- 12.** Set screw and steel ball must be removed if standard bridge option is used.
- 13.** Set screw and steel ball must be removed if blinding option is used.
- 14.** Progressive distributors must be installed on flat surface. Installing a distributor block non-flat surface couse damage to the distributor block and leakage between modular elements.
- 15.** Distance between lubrication point and distributor block must be maximum 2 meters long. But if more distance needed, check-valve must be used on all distributor outlets up to 5 meters distance. Do not install distributor block longer than 5 meters distance.

## RULES TO COMPLY WHILE USING AND WARRANTY CONDITIONS

- 16.** Moving sections of equipment must be considered before installation. Any moving parts must be feeded by flexible hose types and swivel couplings. Also tube length must be long enough to handle movement. Any stationary lubrication points can be feeded by steel tubes.
- 17.** If the pump works without lubricant, pump elements will send air to the points instead of grease. Because of that any points connected to pump will not get any lubricant. Damages on pump and on the system coming from that reason **DISQUALIFIES THE WARRANTY**.
- 18.** Disassembling or loosing any part while pump working is prohibited. Any damage coming from this reason **DISQUALIFIES THE WARRANTY**. Also any personal injury occur from this reason **ALLFETT** does not accept responsibility.
- 19.** Another goal of Centralized Lubrication Systems is to protect environment. So it is adviced to fill grease to the systems by mobile or hand pumps.
- 20.** Unauthorized modifications to the units and the use of unauthorized spare parts and aids prohobited and **DISQUALIFIES THE WARRANTY**. Only maintenance may apply descibed in PAGE 14 - 15. **ALLFETT** Technical Service must be informed to any other possible troubles and necessary procedures must be performed.
- 21.** **ALLFETT Mekanik ve Elektronik Sistemler SAN. TIC. LTD. STI** and **ALLFETT Pazarlama ve Dis Ticaret LTD. STI.** does not accept responsibility for damages described in items above on equipments which **ALLFETT** systems are installed.

## QUALITY SYSTEM



This product is produced by **ALLFETT Mekanik ve Elektronik Sistemler San. Tic. Ltd. Sti.** company, which, is certificated by Bureau Veritas with certificate to compatible for ISO 9001:2008 standard and owner of the quality management system.



## DISTRIBUTOR MAINTENANCE INSTRUCTIONS

### 1. CHECKING PUMP

Progressive distributor blocks operate while electrical grease pump is in operation. When a problem occur, electrical grease pump firstly checked that the grease is coming out from pump element outlet. If you make sure that grease is coming from pump element outlet next step must be checked in order.

### 2. CHECKING LUBRICATION LINES AND COUPLINGS

Any brake off or crushing on lubrication lines between pump and distributors cause leakage. Progressive distributor block will not operate if there is a leakage on the main line its conneted. To diagnosing problem correctly, all lubrication lines conneted to distributors must be checked for leakage, brake off and damages.

### 3. USING INAPPROPRIATE NLGI CLASS

Pump in the system must be filled with grease which appropriate NLGI class. High viscosity class grease types even comes out from pump element loose too much pressure in tubes and can not reach to the distributors. Also environmental temperature may inappropriate for NLGI class used.

**If the NLGI class is higher than recommended or environmental temperature is too low ;**

The grease inside system must completely be removed and filled with recommended grease with appropriate NLGI class.

### 4. INCORRECT INSTALLATION

The length and diameters of the tubes between pump, distributors and lubrication points must be installed by considering the pressure loss chart explained in page 17.

- If tube inside diameter is small and length is too long, the grease inside that tube will not reach to distributor.
- If tube is bended too much for different angles and going up, the grease inside that tube will not reach to distributor.
- Lubrication system lines must be checked for improper installations.



**Lubrication lines must be installed by considering the pressure loss chart. Necessary tube diameter and length measurements for installation is explained with environmental temperature and NLGI class.**



**If the system is properly installed and any topic explained above is not occur, please continue to checking with the description explained on page 18.**

## DISTRIBUTOR MAINTENANCE INSTRUCTIONS

### PRESSURE LOSS CHART

Loosing pressure in lubrication lines depends on differend variables. The most important variables are pump displacement, environmental temperatures, tube diameter and NLGI class. Each variable must be considered for correct lubrication.

The chart below represents the approximate pressure loose in tube which 1 meter long. Results are varies according to pump element displacement volume created by single or multiple pump elements. Result values are defined in bar.

Tube inside diameter	Grease Class	Single pump element displacement					3 pump element displacement					6 pump element displacement				
		2,5 cm <sup>3</sup> / minute					7,5 cm <sup>3</sup> / minute					15 cm <sup>3</sup> / minute				
		-10°C	0°C	10°C	20°C	30°C	-10°C	0°C	10°C	20°C	30°C	-10°C	0°C	10°C	20°C	30°C
<b>Ø6 x 1</b> (Ø4mm)	NLGI 0	4,8	2,6	1,4	0,78	0,48	7,8	4,2	2,4	1,44	0,84	9,6	5,1	3	1,8	1,14
	NLGI 1	8	4,4	2,4	1,3	0,8	13	7	4	2,4	1,4	16	8,5	5	3	1,9
	NLGI 2	12,8	7	3,8	2	1,28	20,8	11,2	6,4	3,84	2,24	25,6	13,6	8	4,8	3
<b>Ø8 x 1</b> (Ø6mm)	NLGI 0	2,7	1,32	0,72	0,42	0,24	3,9	2,1	1,14	0,66	0,42	4,8	2,7	1,56	0,9	0,54
	NLGI 1	4,5	2,2	1,2	0,7	0,4	6,5	3,5	1,9	1,1	0,7	8	4,6	2,6	1,5	0,9
	NLGI 2	7,2	3,52	1,92	1,12	0,64	10,4	5,6	3	1,76	1,12	12,8	7,3	4,16	2,4	1,44
<b>Ø10 x 1</b> (Ø8mm)	NLGI 0	1,44	0,72	0,36	0,21	0,12	2,16	1,1	0,6	0,3	0,18	2,64	1,8	0,78	0,42	0,25
	NLGI 1	2,4	1,2	0,6	0,35	0,2	3,6	1,8	1	0,5	0,3	4,4	2,3	1,3	0,7	0,42
	NLGI 2	3,84	1,92	0,96	0,56	0,32	5,76	2,88	1,6	0,8	0,48	7	3,68	2	1,12	0,67
<b>Ø12 x 1</b> (Ø10mm)	NLGI 0	0,96	0,45	0,22	0,12	0,06	1,32	0,66	0,36	0,18	0,1	1,62	0,84	0,45	0,25	0,15
	NLGI 1	1,6	0,75	0,38	0,2	0,1	2,2	1,1	0,6	0,3	0,18	2,7	1,4	0,75	0,42	0,26
	NLGI 2	2,56	1,2	0,61	0,32	0,16	3,52	1,76	0,96	0,48	0,29	4,32	2,24	1,2	0,67	0,42
<b>R 1/2</b> (Ø15,75mm)	NLGI 0	0,45	0,2	0,09	-	-	0,6	0,27	0,12	0,07	-	0,69	0,33	0,16	0,09	-
	NLGI 1	0,75	0,34	0,16	-	-	1	0,45	0,2	0,12	-	1,15	0,55	0,28	0,16	-
	NLGI 2	1,2	0,54	0,26	-	-	1,6	0,72	0,32	0,19	-	1,84	0,88	0,45	0,26	-
<b>R 3/4</b> (Ø21,25mm)	NLGI 0						0,33	0,15	0,06	-	-	0,39	0,16	0,1	-	-
	NLGI 1						0,55	0,25	0,1	-	-	0,65	0,28	0,18	-	-
	NLGI 2						0,88	0,4	0,16	-	-	1	0,45	0,29	-	-
<b>R 1</b> (Ø27mm)	NLGI 0											0,24	0,12	0,09	-	-
	NLGI 1											0,4	0,2	0,16	-	-
	NLGI 2											0,64	0,32	0,26	-	-



**It should not be forgotten that the grease penetration properties is variable at different environment temperatures.**

## DISTRIBUTOR MAINTENANCE INSTRUCTIONS

### 5. INSPECTING BLOCKED LUBRICATION POINT

Remove the inlet connection tube from distributor. Send grease to distributor by using hand pump. If using hand pump to send grease is difficult or not even not possible ;

Remove the one of an outlet tube from distributor. Try to use hand pump to send grease to distributor. If using hand pump to send grease is still difficult or not even not possible, remove another outlet tube from distributor and try to pump again. Repeat this step for each outlet tube until finding blocked one.

When blocked lubrication line is removed from distributor, sending grease by hand pump gets easy. Lubricant coming should be seen from distributor outlets. Blocked lubrication point is found. Clear the blockage from lubrication point.



**Blocked lubrication point indicator is optional. Each outlet equipped with blockage indicator allows user to determine which lubrication point is blocked easily. With this equipment, progressive distributor continue to operate if there is a blockage**

### 6. CLEARING BLOCKAGE ON DISTRIBUTOR

Remove the inlet connection tube from distributor. Send grease to distributor by using hand pump. If using hand pump to send grease is difficult or not even not possible that means distributor is blocked due to small particles in lubricant.



**Lubricant will be used in the system must certainly be clean and any foreign materials must not enter while filling.**



**Do not use rubber based grease in system.  
Do not use grease types with graphite in system.**

Distributor parts must be disassembled to clear blockage. All parts disconnected carefully and cleaned by a diesel based fluid. Each part must be assembled again to its own position. It is important that each piston inside a middle element must be assembled to its own middle element even if they are same dimension. After cleaning and assembling again, sending grease to distributor block should be easy and grease is coming from its outlets.



**Any maintenance on system under high pressure could lead to personal injury. Discharge the system pressure before any maintenance .**



**Unauthorized modifications to the units and the use of unauthorized spare parts and aids prohibited and disqualify the warranty.**

**ORDER INFORMATION**

<b>Product name - Description</b>	<b>Ordering number</b>
Progressive distributor block 3/6	<b>40 00 03 00</b>
Progressive distributor block 4/8	<b>40 00 04 00</b>
Progressive distributor block 5/10	<b>40 00 05 00</b>
Progressive distributor block 6/12	<b>40 00 06 00</b>
Progressive distributor block 7/14	<b>40 00 07 00</b>
Progressive distributor block 8/16	<b>40 00 08 00</b>
Progressive distributor block 9/18	<b>40 00 09 00</b>

**SALES****ALLFETT PAZARLAMA VE DIŞ TİCARET LTD. ŞTİ.**

Yeni Eyüp Bulvarı, Topçular Caddesi, Set Üstü, No:1 Demirkapı-Rami / İstanbul  
Telefon: 0 212 501 32 01 (PBX) [www.allfett.net](http://www.allfett.net)  
Fax : 0 212 501 33 37 [info@allfett.net](mailto:info@allfett.net)

## WARRANTY

Utilisation of this warranty certificate has been permitted by The Republic of Turkey, The Ministry of Industrial and Commerce, The general Administration of Protection of Consumer Right and Competition, in accordance with the law numbered 4077 .

### PRODUCER COMPANY

NAME : ALLFETT Mekanik ve Elektronik Sistemler  
San. ve Tic. Ltd. Şti.  
CENTRAL ADRESS : Yeni Eyup Bulvari, Topcular Cad. Set Ustu, No:1 Demirkapı-  
Rami / İstanbul  
TELEPHONE : 0212 501 32 01 (PBX)  
FAX : 0212 501 33 37

### AUTHORISED PERSON

SIGNATURE - STAMP : :

### PRODUCT

TYPE : Grease distributor  
BRAND : ALLFETT  
MODEL : Progressive distributor block.  
SERIAL NUMBER : .....  
DELIVERY DATE / PLACE : .....  
WARRANTY : 2 years  
REPAIR TIME : 30 days

### SALER COMPANY

NAME : .....  
CENTRAL ADRESS : .....  
TELEPHONE : .....  
FAX : .....  
BILL DATE / NUMBER : .....

## WARRANTY CONDITIONS

1. The warranty period is two years from the date of delivery.
2. The product including all its components is under the warranty of our company.
3. In case of defects within the warranty period the period spent in repairing is added to the warranty period. The repairing period is maximum 30 days. This period starts from the date of delivery of the product to the services centers or to the seller, the agency the representative, the importer or the manufacturer of the product respectively, in case there are service centers.
4. In case the product has material, workmanship or manufacturing defects, the product will be repaired free of charge and expenses of any sort including labor, the value of the parts replaced or any our charges.
5. The product will be replaced free of charge;
  - If the product permanently disfunctions due to repeating the same defect more than four times within the warranty period
  - If the maximum period for repairing is exceeded.
  - If it is determined that the defect cannot be repaired by report written by the service, or in the absence of service centers, by the seller, agency, representative, importer or manufacturer of the product respectively.
6. The present warranty does not cover damages resulting from importer handling by deviating from the instructions in the manual.
7. General administration of protection of consumer rights and competition in the ministry of industry and commerce may be applied for problems concerning the warranty certificate.

## **DANGEROUS OR HARMFUL CONDITIONS TO ENVIRONMENTAL AND HUMAN HEALTH DURING USE**

All ALLFETT systems are producing according to relevant provisions of security regulations. There is no risk for environmental and human health during use.

## **TRANSPORT AND STORAGE**

There are no restrictions on transportation by land, air and sea. In general, products should be stored in a dry and dust-free environment. The storage temperatures are between -10°C and +40°C.

All products are packed with paper based support material to reduce damage. Upon receiving the package please check the items for possible damage.



**ALLFETT MEKANİK VE ELEKTRONİK SİSTEMLER  
SAN. VE TİC. LTD. ŞTİ.**

Topçular Mahallesi, Topçular Caddesi No:1/1 - Eyüp / İstanbul

Telefon : 0 212 501 32 01 (PBX)

[www.allfett.net](http://www.allfett.net)

Fax : 0 212 501 33 37

[info@allfett.net](mailto:info@allfett.net)