



HP - 1 for Grease

HP - 2 For Oil

MANUALLY OPERATED PUMPS

INTRODUCTION AND USER MANUAL

VERSION 2.00

INTRODUCTION

All industrial machinery, equipments and vehicles are working under abrasive operating conditions. The wear between frictional parts become the most highest level at these conditions. Machinery expose bad weather, dust, dirt, rain, snow and heavy weight in most cases. Consequently unwanted breakdowns occur and by that way productivity loss is inevitable.

Using automatic lubrication system only increase your profitability. ALLFETT completely take over the work load spend on lubrication with a system which is bringing together a pump, control unit, distributors, tubes and couplings. Lubrication work is done by ALLFETT centralized lubrication systems in efficient time of machinery or vehicle which is while operating.

Lubrication is important for all frictional parts but using correct lubrication system and method only protect parts from wearing for a long time. Feeding lubrication points with correct dosage of lubricant at certain intervals while machinery is operating, provides lubricant film in place longer between parts. By ALLFETT lubrication systems life time of parts on your machinery and vehicles will be increased.

ABOUT MANUFACTURER

With over 25 years experience of manufacturing Centralized Lubrication Systems ALLFETT is able to provide a wide professional approach to select the correct Centralized Lubrication System for industry and heavy machinery.

A highly accurate manufacturing process is involved in producing Centralized Lubrication Systems in order that systems meet the very tight quality procedures and state of the art processes are employed. ALLFETT is among the few companies whose products meet the exact technical and quality standards for a correct central lubrication. We present our high quality and advanced product design concept to our worldwide costumers through our strong brand.

ALLFETT creates new opportunities and innovative solutions. As a result of the satisfaction of our customers with our good quality lubrication systems we are continuing in growing in the local and international market and became one of the successful companies in the field.

WARNINGS

Symbols and words shown below are meant to warn a particular risk to persons, material assets, or the environment. Please carefully read this manual before installing. Failure to follow the instructions and safety precautions in this manual could result in serious injury or property damage.

**Caution****Notice****Electricity****Prohibition**

CONTENTS

INTRODUCTION _____	PAGE 1
CONTENTS _____	PAGE 2
PRODUCT DESCRIPTION AND GENERAL SPECIFICATIONS _____	PAGE 3
PRODUCT DIMENSIONS _____	PAGE 4
PRODUCT COMPONENTS _____	PAGE 5
FUNCTION _____	PAGE 6
LUBRICANT INFORMATION _____	PAGE 7
PUMP MAINTENANCE _____	PAGE 8
RULES TO COMPLY WHILE USING AND WARRANTY CONDITIONS _____	PAGE 9 - 10
ORDER INFORMATION _____	PAGE 11
WARRANTY _____	PAGE 12
WARRANTY CONDITIONS _____	PAGE 13

PRODUCT DESCRIPTION

Manual pumps are designed for all earth moving machines, heavy commercial vehicles, mining equipment, industrial machinery and equipment. Grease and oil can be used for lubrication. They have one outlet.

The reservoir is manufactured from transparent polycarbonate to allow user easily check the level of grease. The volume of the reservoir is 1 liter. Following plate is used to make grease flow fluent. Filling is done via grease nipple at pump body.

GENERAL SPECIFICATIONS

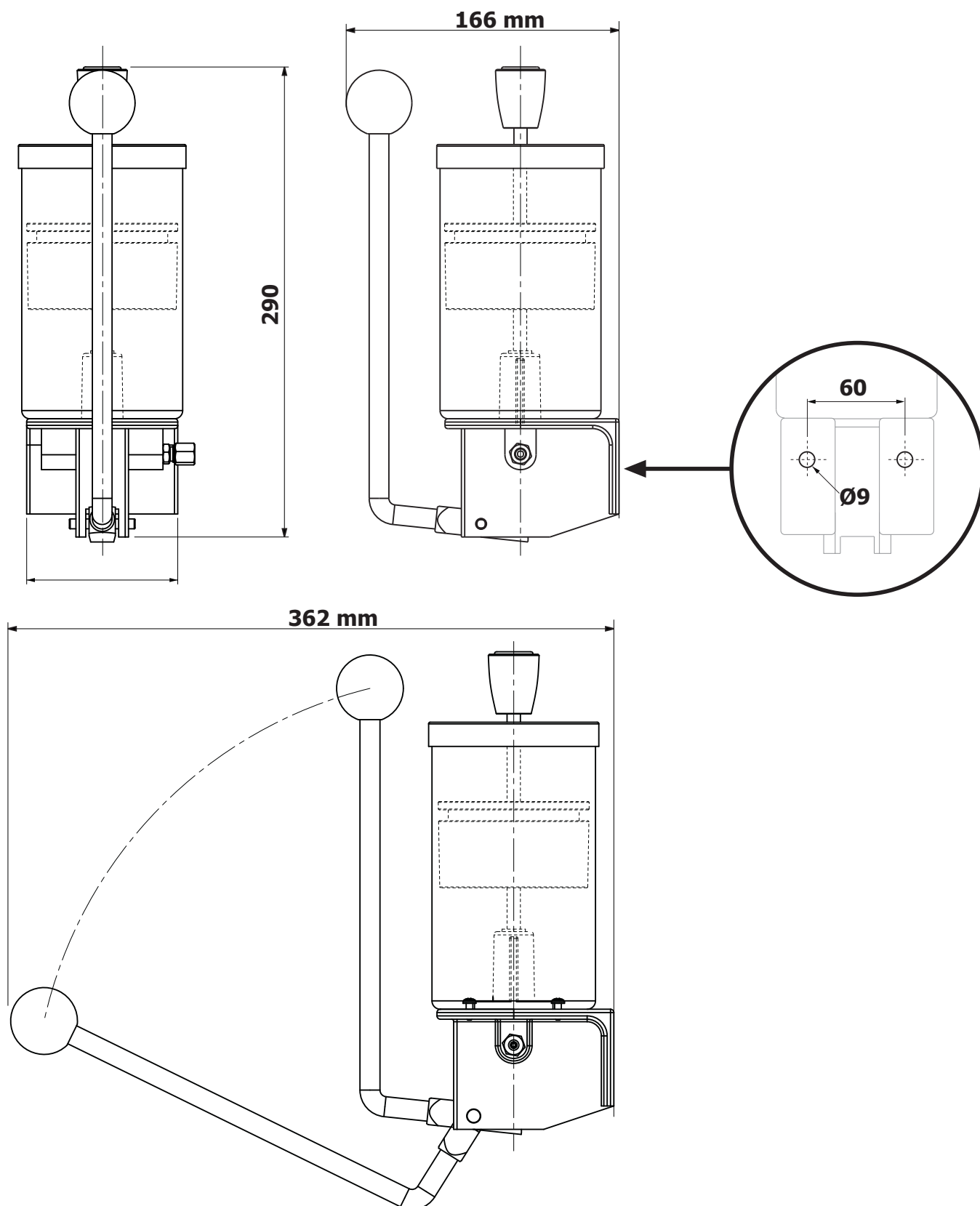
Drive	: Manually operated
Max. pressure	: 300 bar.
Stroke volume / single pull	: 1,5 cm ³
Grease types	: NLGI 00 (-30°C) - (-10°C) NLGI 0 (-10°C) - (0°C) NLGI 1 (0°C) - (10°C) NLGI 2 (10°C) - (30°C) NLGI 3 (30°C +)
Liquid grease types	: NLGI 0000 NLGI 000
Oil types	: Between 40 cSt - 100 cSt oils can be used.
Working temperature	: -25°C +80°C
Reservoir capacity	: 1 Liters



Do not use rubber based grease with manual pumps.

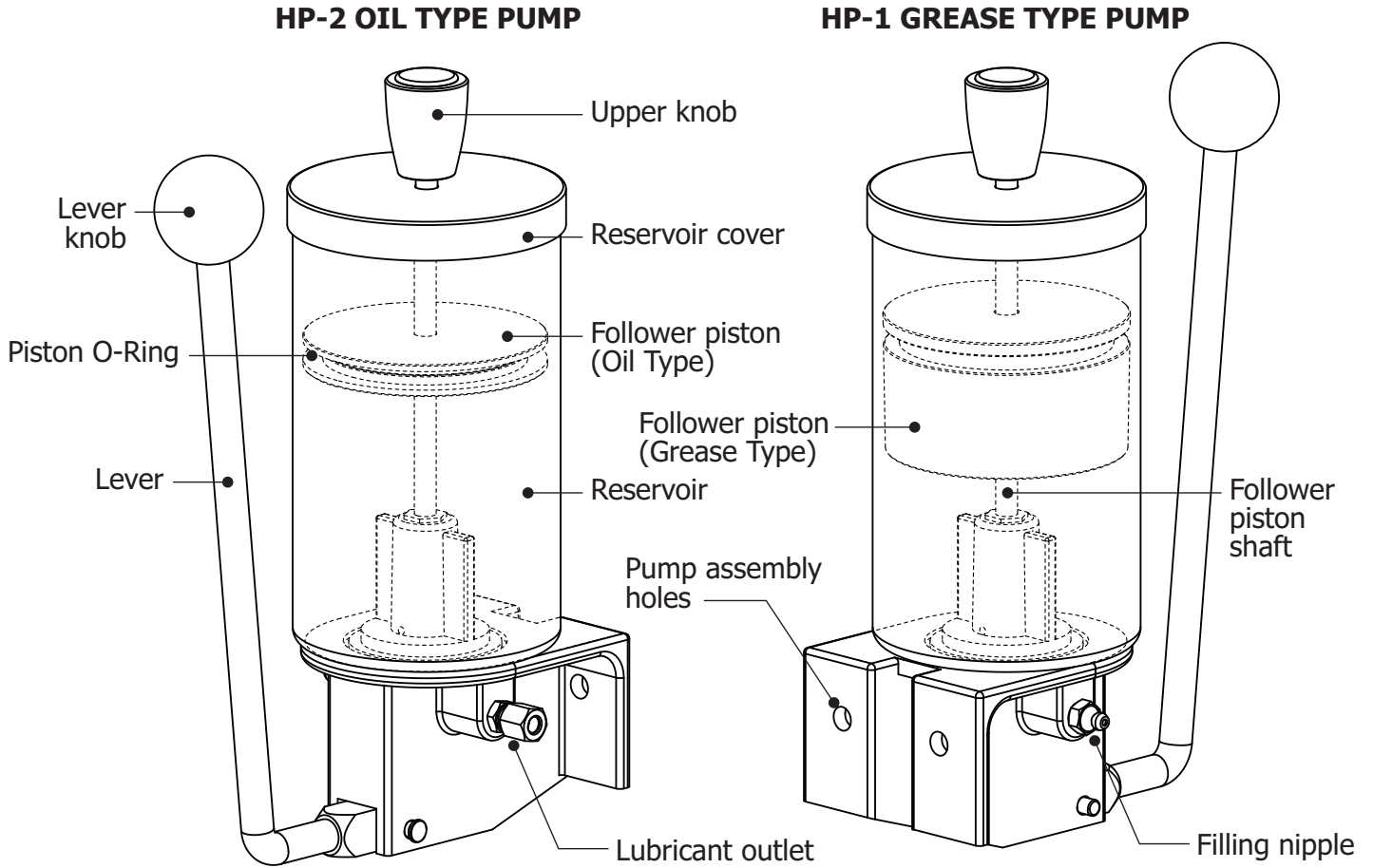
PRODUCT DIMENSIONS

Technical drawings below represents the HP-1 and HP-2 pumps. Grease and oil type pumps has same dimensions. Dimension unit is millimeter.



PRODUCT COMPONENTS

Schema below represents the HP-1 and HP-2 pump models. Components of the pump types are described. Follower piston type inside reservoir describe which one is for oil or grease.



TECHNICAL SERVICE

ALLFETT MEKANİK VE ELEKTRONİK SİSTEMLER SAN. VE TİC. LTD. ŞTİ.
Yeni Eyüp Bulvarı, Topçular Caddesi, Set Üstü, No:1 Demirkapı-Rami / İstanbul
Telefon: 0 212 501 32 01 (PBX) www.allfett.net
Fax : 0 212 501 33 37 info@allfett.net

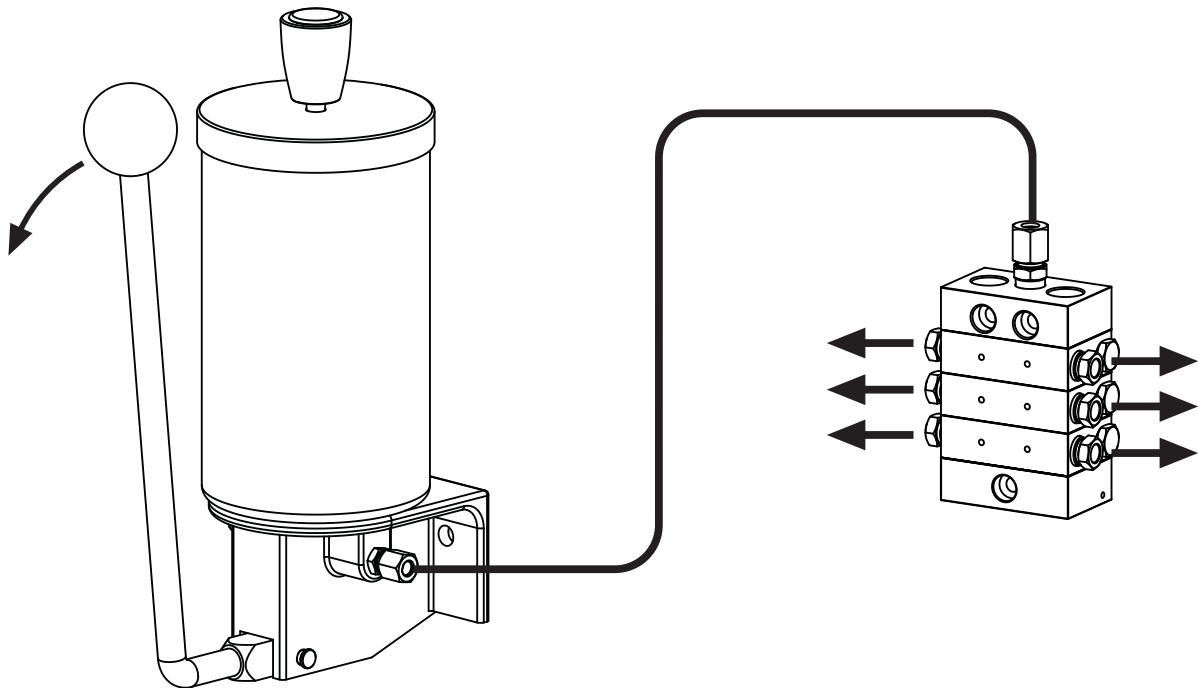
FUNCTIONAL DESCRIPTION

Along with pulling lever of the **HP-1** or **HP-2** pumps ;

Spring returned piston vacuums the lubricant inside reservoir. Movement of the lever pushes piston so that the lubricant vacuomed before is sended to pump outlet with high pressure.

The lubricant coming out from pump ;

Displacement volume of the pump can be connected to single lubrication point. However displacement volume can also be divided by progressive distributor to feed multiple lubrication points.



Oil distributors can not be used with Manual oil pumps.



Unauthorized modifications to the units and the use of unauthorized spare parts and aids prohibited also disqualify the warranty.

LUBRICANT INFORMATION

Lubricant specifications can be used with ALL-1 pumps are described below. Before filling reservoir please read carefully these informations.



Lubricant will be used in the system must certainly be clean and any foreign materials must not enter while filling.



ALL-1 pumps are designed to use with in centralized lubrication systems only. It is not suitable to use ALL-1 pump for lubricant tranfering or circulation purpose.



To remind that lubricants has content which may hazardous to environment. It is important that the county specific regulations and laws on the use and disposal of lubricants must be observed.

Lubricant type - Oil

ISO viscosity 40 to 220 grade oils can be used with LUBMATIC pumps.

It is recomend that the oil will be used in the system should be resistant to higher temperatures, and maintain the viscosity characteristics. Additionally oil should provide lubricant film stability, water resistance and corrosion protection abilities.

Lubricant type - GREASE

NLGI classes can be used with ALL-1 pumps are described below. Because of the flow characteristics of grease the NLGI class range should be changed at different weather conditions and also temperature differencies.

for **NLGI 00** grease recomend working temperature is between -30°C and -10°C

for **NLGI 0** grease recomend working temperature is between -10°C and 0°C

for **NLGI 1** grease recomend working temperature is between 0°C and 10°C

for **NLGI 2** grease recomend working temperature is between 10°C and 30°C

for **NLGI 3** grease recomend working temperature is 30°C and over



Keep in mind that the substances of any lubricant are harmful to environment. Their transport and storage require that special safety measures be taken.



Only LITHIUM based and EP additive liquid greases must be used with in system.

It is important that the grease will be used must resistant to high pressure. Make sure the liquid grease you are using is EP additive.



Do not use rubber based grease in system.

Do not use grease types with graphite in system.

PUMP MAINTENANCE

1. Lever can be pulled but no lubricant comes out ;

- a. Lubricant inside pump decreased under minimum level. Fill the reservoir according to items 6, 7, 8, 9, 10, and 11 in RULES TO COMPLY WHILE USING AND WARRANTY CONDITIONS.
- b. Piston system inside pump may take air. Make sure the follower piston stays on lubricant correctly. There should be no air between lubricant and follower piston.
- c. Lubricant inside pump system may frozen according to environmental conditions. Lubricant must be unfrozen.
- d. Foreign materials, dirt or small particules may enter while filling the pump. Pump's piston system must clean with diesel based liquid.



Do not use rubber based grease with manual pumps.

2. Lever can not be pulled ;

- a. Lubricant inside pump system may get thick according to environmental conditions. Thus the lever may be pulled hard or not be pulled. Lubricant inside pump must be changed.
- b. Lubrication point connected to pump may blocked. Because of this reason lever may not be pulled. Blocked lubrication point must be opened.

TECHNICAL SERVICE

ALLFETT MEKANİK VE ELEKTRONİK SİSTEMLER SAN. VE TİC. LTD. ŞTİ.
Yeni Eyüp Bulvarı, Topçular Caddesi, Set Üstü, No:1 Demirkapı-Rami / İstanbul
Telefon: 0 212 501 32 01 (PBX) www.allfett.net
Fax : 0 212 501 33 37 info@allfett.net

RULES TO COMPLY WHILE USING AND WARRANTY CONDITIONS

- 1.** Damages occur while additional transports after delivering the goods from ALLFETT to the customer **DISQUALIFIES THE WARRANTY.**
- 2.** Pumps are produced to lubrication purpose only and are not convenient to work more than 2 hours continuously. Working under maximum pressure more than 2 hours will harm the system. Damages occur from this reason **DISQUALIFIES THE WARRANTY.**
- 3.** Washing of the pump with pressured water causes damage. Any damage occur from this reason **DISQUALIFIES THE WARRANTY.**
- 4.** Pump reservoir is made of transparent material to see grease level. Painting any part of the pump is not recommended. Any painted parts **DISQUALIFY THE WARRANTY.**
- 5.** Only proper lubricant class must be used with in pump. If using grease, NLGI class must be changed according to weather conditions. Use NLGI 0 for cold weather, increase the NLGI class up to 3 towards
- 6.** Only LITHIUM based and EP additive grease types must be used with in system.
- 7.** Rubber based lubricant types must not be used in the system. Damages or faults occur from this reason **DISQUALIFIES THE WARRANTY.**
- 8.** Lubricant will be used in the system must certainly be clean and any foreign materials must not enter while filling.
- 9.** Any foreign materials, dirt or small particules while filling lead to system units failing and possibly property damage to equipments. Damages or faults occur from this reason **DISQUALIFIES THE WARRANTY.**
- 10.** Pump must be filled from the grease nipple. If grease level is lower than the minimum level (as you can not see grease level) grease nipple must be used to prevent air entrance inside the pomp body. Lockable filling cover option can only be used after filling pump from grease nipple up to minimum level.
- 11.** If top cover opened to fill pump, environment must be clean to avoid any foreign materials entering to reservoir. Any foreign materials, dirt or small particules while filling lead to system units failing and possibly property damage. Damages or faults occur from this reason **DISQUALIFIES THE WARRANTY.**

RULES TO COMPLY WHILE USING AND WARRANTY CONDITIONS

- 12.** If the pump works without lubricant, pump elements will send air to the points instead of grease. Because of that any points connected to pump will not get any lubricant. Damages on pump and on the system coming from that reason **DISQUALIFIES THE WARRANTY**.
- 13.** Another goal of Centralized Lubrication Systems is to protect environment. So it is adviced to fill grease to the systems by mobile or hand pumps.
- 14.** Unauthorized modifications to the units and the use of unauthorized spare parts and aids prohobited and **DISQUALIFIES THE WARRANTY**. Only maintenance may apply descibed in PAGE 14 - 15. ALLFETT Technical Service must be informed to any other possible troubles and necessary procedures must be performed.
- 15.** ALLFETT Mekanik ve Elektronik Sistemler SAN. TIC. LTD. STI and ALLFETT Pazarlama ve Dis Ticaret LTD. STI. does not accept responsibility for damages described in items above on equipments which ALLFETT systems are installed.

QUALITY SYSTEM



This product is produced by **ALLFETT Mekanik ve Elektronik Sistemler San. Tic. Ltd. Sti.** company, which, is certificated by Bureau Veritas with certificate to compatible for ISO 9001:2008 standard and owner of the quality management system.

PRODUCT ORDER INFORMATION

Ordering numbers of the HP-1 and HP-2 pumps are described below.



Product name - Description	Ordering numbers
Manual grease pump	10 00 HP 01
Manual oil pump	10 00 HP 02

SALES

ALLFETT PAZARLAMA VE DIŞ TİCARET LTD. ŞTİ.

Yeni Eyüp Bulvarı, Topçular Caddesi, Set Üstü, No:1 Demirkapı-Rami / İstanbul
Telefon : 0 212 501 32 01 (PBX) www.allfett.net
Fax : 0 212 501 33 37 info@allfett.net

WARRANTY

Utilisation of this warranty certificate has been permitted by The Republic of Turkey, The Ministry of Industrial and Commerce, The general Administration of Protection of Consumer Right and Competition, in accordance with the law numbered 4077 .

PRODUCER COMPANY

NAME : ALLFETT Mekanik ve Elektronik Sistemler
San. ve Tic. Ltd. Şti.
CENTRAL ADDRESS : Yeni Eyup Bulvari, Topcular Cad. Set Ustu, No:1 Demirkapı-
Rami / İstanbul
TELEPHONE : 0212 501 32 01 (PBX)
FAX : 0212 501 33 37

AUTHORISED PERSON

SIGNATURE - STAMP : :

PRODUCT

TYPE : Manually operated lubrication pump
BRAND : ALLFETT
MODEL : HP-1 Manual grease pump ☐
HP-1 Manual grease pump ☐
SERIAL NUMBER :
DELIVERY DATE / PLACE :
WARRANTY : 2 YIL
REPAIR TIME : 30 days

SALER COMPANY

NAME :
CENTRAL ADDRESS :
TELEPHONE :
FAX :
BILL DATE / NUMBER :

WARRANTY CONDITIONS

1. The warranty period is two years from the date of delivery.
2. The product including all its components is under the warranty of our company.
3. In case of defects within the warranty period the period spent in repairing is added to the warranty period. The repairing period is maximum 30 days. This period starts from the date of delivery of the product to the services centers or to the seller, the agency the representative, the importer or the manufacturer of the product respectively, in case there are service centers.
4. In case the product has material, workmanship or manufacturing defects, the product will be repaired free of charge and expenses of any sort including labor, the value of the parts replaced or any our charges.
5. The product will be replaced free of charge;
 - If the product permanently disfunctions due to repeating the same defect more than four times within the warranty period
 - If the maximum period for repairing is exceeded.
 - If it is determined that the defect cannot be repaired by report written by the service, or in the absence of service centers, by the seller, agency, representative, importer or manufacturer of the product respectively.
6. The present warranty does not cover damages resulting from importer handling by deviating from the instructions in the manual.
7. General administration of protection of consumer rights and competition in the ministry of industry and commerce may be applied for problems concerning the warranty certificate.

DANGEROUS OR HARMFUL CONDITIONS TO ENVIRONMENTAL AND HUMAN HEALTH DURING USE

All ALLFETT systems are producing according to relevant provisions of security regulations. There is no risk for environmental and human health during use.

TRANSPORT AND STORAGE

There are no restrictions on transportation by land, air and sea. In general, products should be stored in a dry and dust-free environment. The storage temperatures are between -10°C and +40°C.

All products are packed with paper based support material to reduce damage. Upon receiving the package please check the items for possible damage.

[illegible]



ALLFETT MEKANİK VE ELEKTRONİK SİSTEMLER SAN. VE TİC. LTD. ŞTİ.

Topçular Mahallesi, Topçular Caddesi No:1/1 - Eyüp / İstanbul

Telefon : 0 212 501 32 01 (PBX)

www.allfett.net

Fax : 0 212 501 33 37

info@allfett.net